

ZONING DISTRICT MAP, CARLISLE, MASS.

HISTORY:
 Zoning Map adopted March 1962
 Wetland District adopted May 5, 1976
 Zoning Map redrafted April 1979
 Residence M District adopted April 1, 1980
 Wetland/Floodhazard District adopted April 2, 1980
 Zoning Map revised, April 1, 1981
 Map Updated, January 1, 1988

STATUS OF WAYS

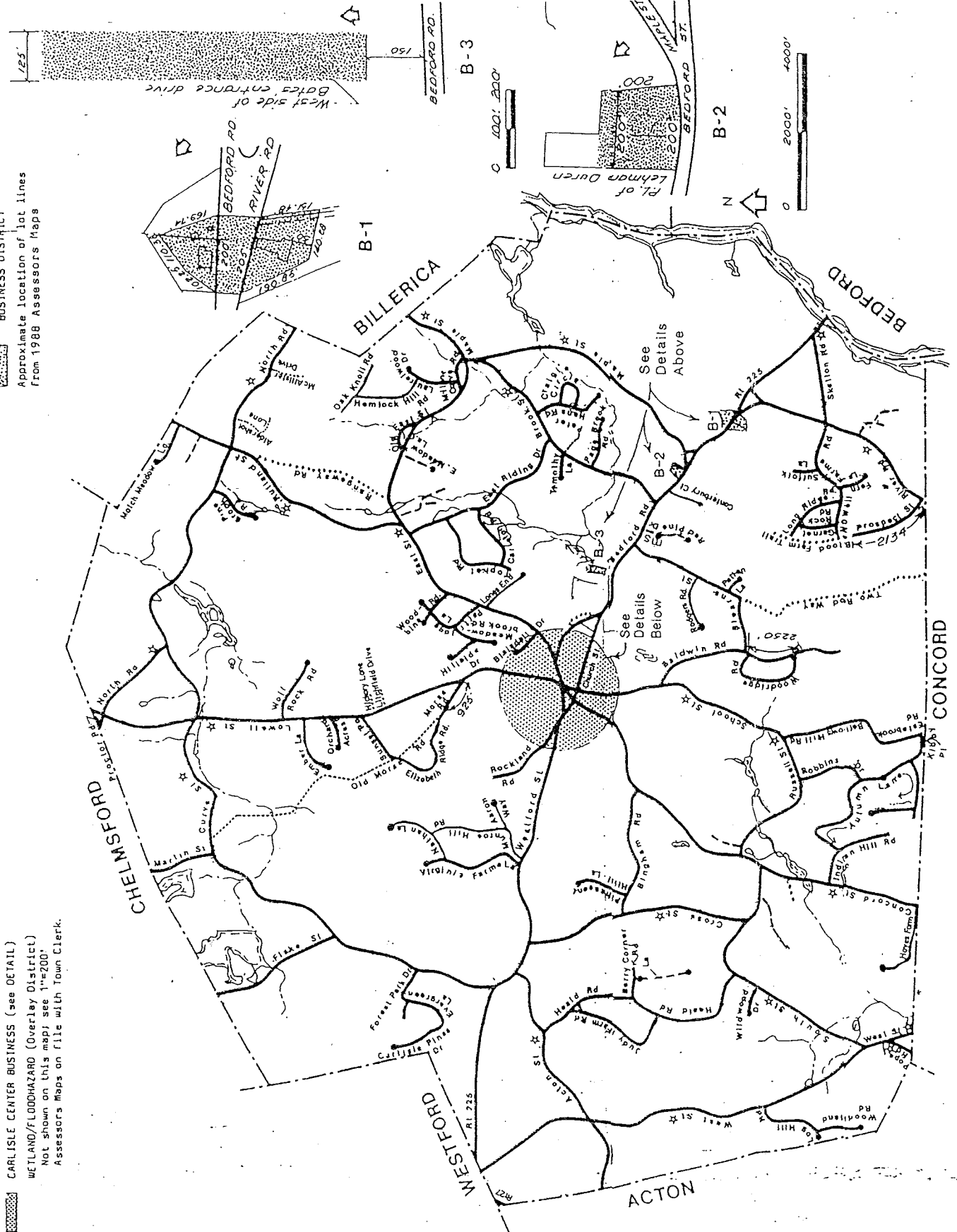
- Accepted Town Way
- - - Private Way
- Private Way
- * Scenic Road (G.L.Ch.67)

ZONING DISTRICTS

- RESIDENCE A (1 acre, 150' frontage)*
 - RESIDENCE B (2 acres, 250' frontage)*
 - * add 2 acres for Park Chop lots with 40' frontage - see Sec.4-A.2.
 - RESIDENCE M (see RES. A DETAIL)
 - BUSINESS (see DETAILS B.1-3)
 - CARLISLE CENTER BUSINESS (see DETAIL)
 - WETLAND/FLOODHAZARD (Overlay District)
- Not shown on this map: see 1"=200'
 Assessors Maps on file with Town Clerk.

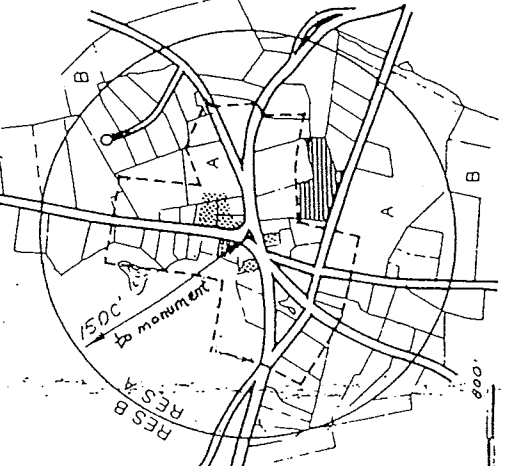
BUSINESS DISTRICT DETAILS B.1-3

BUSINESS DISTRICT
 Approximate location of lot lines
 from 1988 Assessors Maps



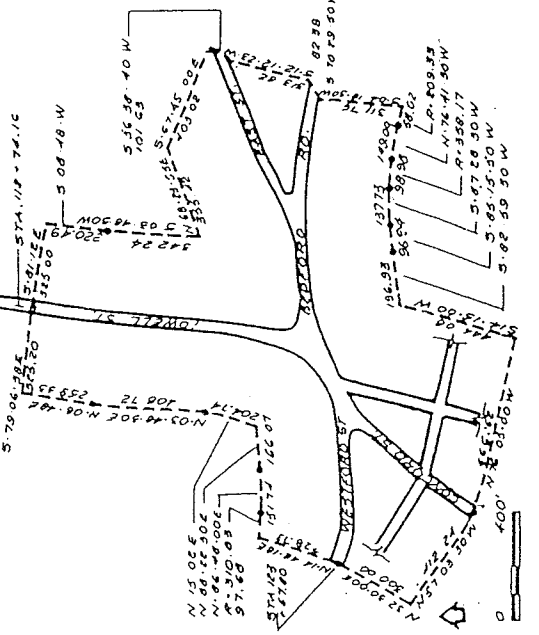
RESIDENCE A DISTRICT DETAIL

Lot lines as shown on 1988 Assessors Maps
 RESIDENCE A
 RESIDENCE B
 RESIDENCE M



HISTORIC DISTRICT DETAIL

Note: Historic District adopted June 16, 1969.
 This is not a zoning district; see Town Bylaws, Article IX, for applicable regulations.



CARLISLE CENTER DETAIL

Owners as shown on both 1962 and 1933 Zoning Maps.
 Lot lines as shown on 1988 Assessors Maps

